

PLATE XI - SCARIDAE



81. *Scarus ghobban* initial phase, 22.8 cm SL, Pohnpei, Micronesia (photo by J.E. Randall)



82. *Scarus ghobban* terminal phase, 25.5 cm SL, Fanning I., Kiribati (photo by J.E. Randall)



83. *Scarus globiceps* initial phase, 16.6 cm SL, Lizard I., Australia (photo by J.E. Randall)



84. *Scarus globiceps* terminal phase, 22.2 cm SL, Palmyra I., U.S. Minor Outlying Is. (photo by J.E. Randall)



85. *Scarus hypselopterus* initial phase, 17.1 cm SL, Pulau Tulai, Malaysia (photo by J.E. Randall)



86. *Scarus hypselopterus* terminal phase, 19.4 cm SL, Cebu, Philippines (photo by J.E. Randall)

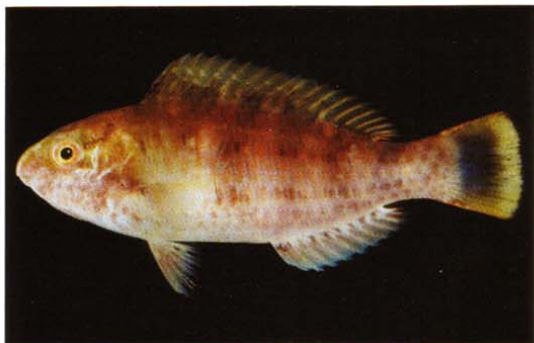


87. *Scarus koputea* initial phase, 22.1 cm SL, Hiva Oa, Marquesas Is. (photo by J.E. Randall)



88. *Scarus koputea* terminal phase, 26.7 cm SL, Fatu Hiva, Marquesas Is. (photo by J.E. Randall)

PLATE XII - SCARIDAE



89. *Scarus longipinnis* initial phase, 7.3 cm SL, Bulari Pass, New Caledonia (photo by J.E. Randall)



90. *Scarus longipinnis* terminal phase, 19.3 cm SL, One Tree I., Australia (photo by J.E. Randall)



91. *Scarus niger* initial phase, 19.8 cm SL, Enewetak, Marshall Is. (photo by J.E. Randall)



92. *Scarus niger* terminal phase, 24.5 cm SL, Mahé, Seychelles (photo by J.E. Randall)



93. *Scarus oviceps* initial phase, 19.8 cm SL, Teavaraa Pass, Tahiti (photo by J.E. Randall)



94. *Scarus oviceps* terminal phase, 21.8 cm SL, Alite Reef, Solomon Is. (photo by J.E. Randall)



95. *Scarus prasiognathos* initial phase, 22.5 cm SL, Villingili, Maldives (photo by J.E. Randall)



96. *Scarus prasiognathos* terminal phase, 30.3 cm SL, Villingili, Maldives (photo by J.E. Randall)



PLATE XIII - SCARIDAE



97. *Scarus psittacus* initial phase, 17.1 cm SL, Lizard I, Australia (photo by J.E. Randall)



98. *Scarus psittacus* terminal phase, 22.8 cm SL, Lizard I., Australia (photo by J.E. Randall)



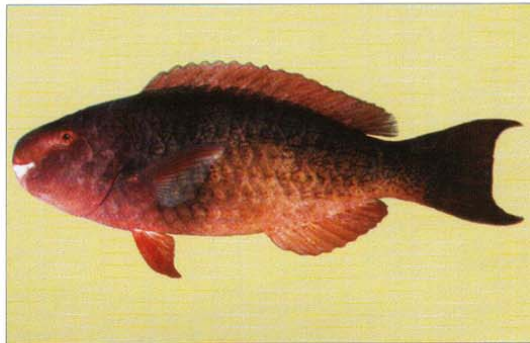
99. *Scarus quoyi* terminal phase, 16.9 cm SL, Cebu, Philippines (photo by J.E. Randall)



100. *Scarus rivulatus* initial phase, 21.3 cm SL, Lizard I., Australia (photo by J.E. Randall)



101. *Scarus rivulatus* terminal phase, 25.7 cm SL, Okinawa, Ryukyu Is. (photo by J.E. Randall)



102. *Scarus rubroviolaceus* initial phase, 42.5 cm SL, Kona, Hawaii (photo by J.E. Randall)

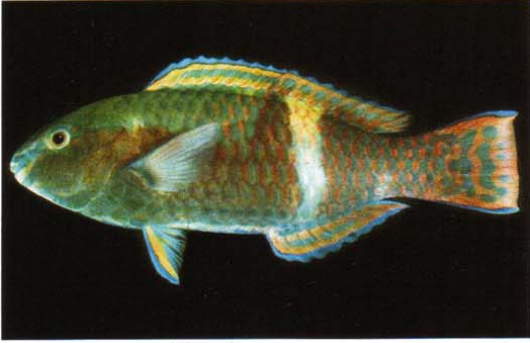


103. *Scarus rubroviolaceus* terminal phase, 35.5 cm SL, Enewetak, Marshall Is. (photo by J.E. Randall)



104. *Scarus schlegeli* initial phase, 15.7 cm SL, Enewetak, Marshall Is. (photo by J.E. Randall)

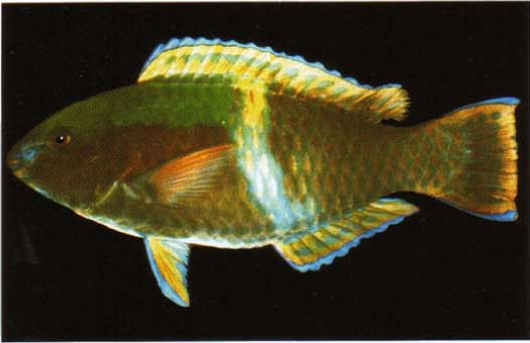
PLATE XIV - SCARIDAE



105. *Scarus schlegeli* terminal phase, 16.8 cm SL, Enewetak, Marshall Is. (photo by J.E. Randall)



106. *Scarus schlegeli* terminal phase, 21.3 cm SL, Rangiroa, French Polynesia (photo by J.E. Randall)



107. *Scarus schlegeli* terminal phase, 19.9 cm SL, Yonge Reef, Great Barrier Reef (photo by J.E. Randall)



108. *Scarus spinus* initial phase, 11.8 cm SL, Heron I. Australia (photo by J.E. Randall)



109. *Scarus spinus* terminal phase, 21.7 cm SL, Vava'u, Tonga (photo by J.E. Randall)



110. *Scarus tricolor* initial phase, 24.8 cm SL, Washington I., Kiribati (photo by J.E. Randall)



111. *Scarus tricolor* terminal phase, 21.8 cm SL, Florida I., Solomon Is. (photo by J.E. Randall)