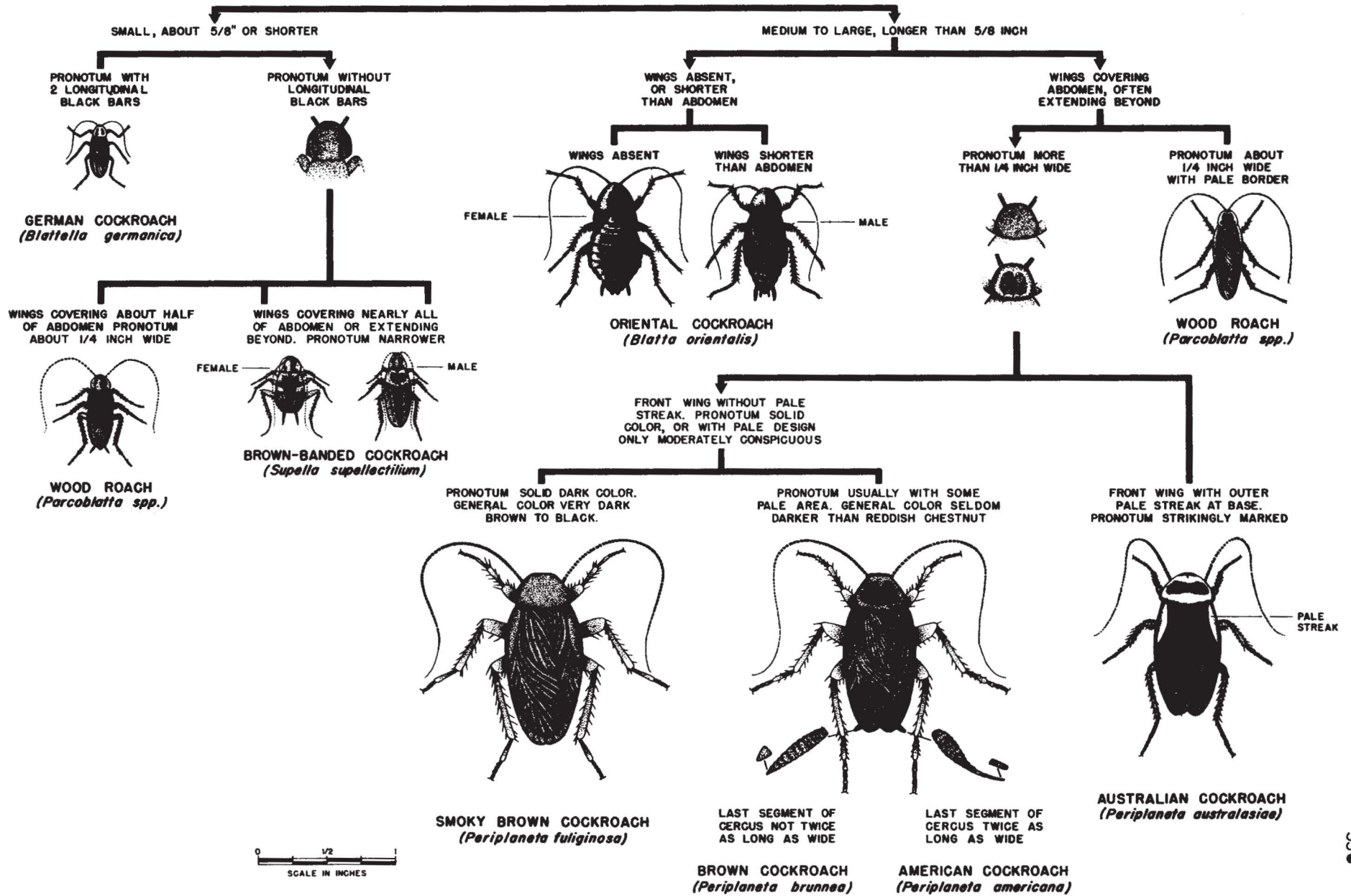
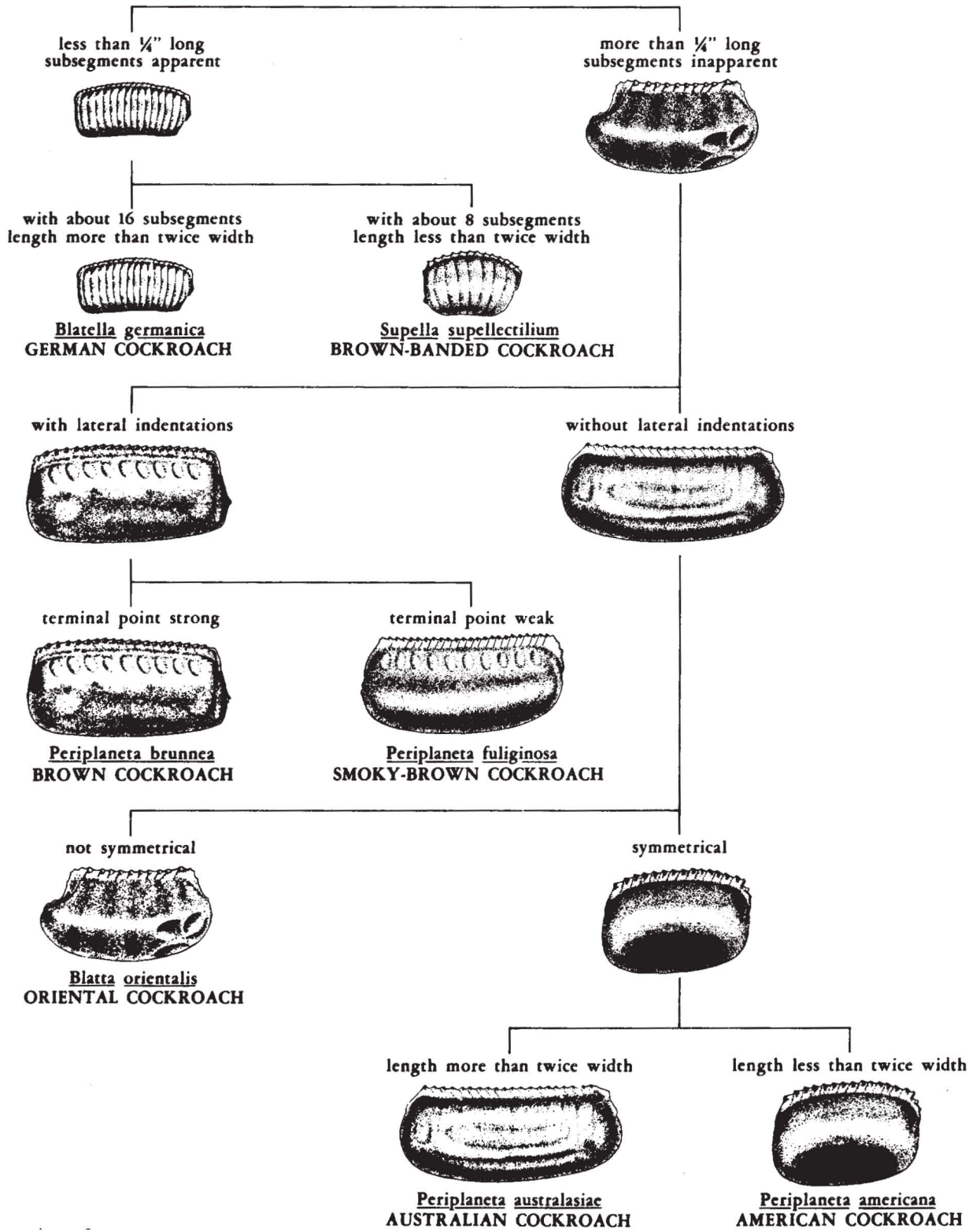


COCKROACHES: PICTORIAL KEY TO SOME COMMON SPECIES

Harry D. Pratt



COCKROACHES: KEY TO EGG CASES OF COMMON DOMESTIC SPECIES
Harold George Scott, Ph.D. and Margery R. Borom



COCKROACHES: KEY TO SOME COMMON SPECIES FOUND IN THE UNITED STATES
Harry D. Pratt & Chester J. Stojanovich

1. Middle and hind femora both with numerous strong spines along the ventral margin (Fig. 1 A)..2
 Middle and hind femora without strong spines along the ventral margin (Fig. 1 B).....12

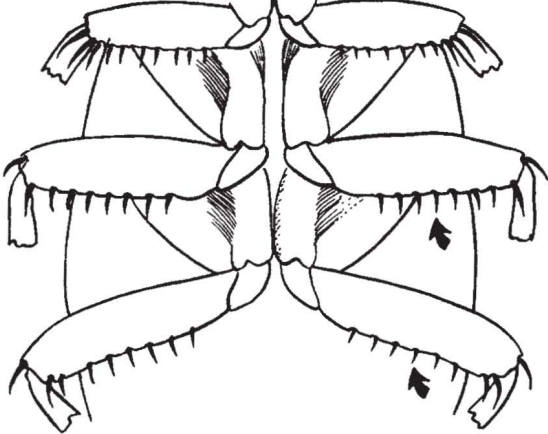


Fig. 1 A

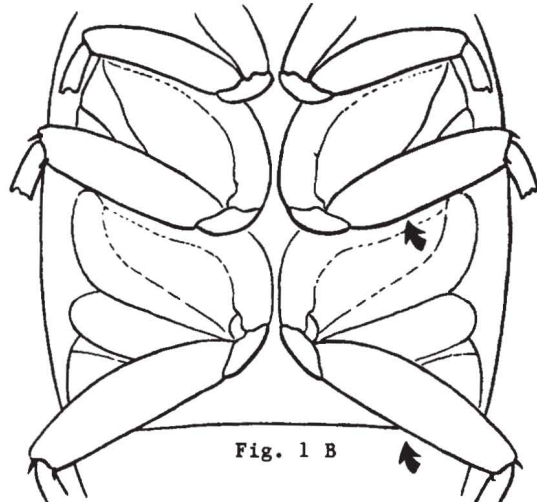


Fig. 1 B

2. Comparatively large species 18 mm. or longer; subgenital plate of female divided longitudinally, valvular (Fig. 2 A); male styli similar, slender, elongate and straight (Fig. 2 B).....3

Species usually less than 18 mm. long; or, if longer, anterior-ventral margin of front femur with several large stout spines on basal portion, followed by a row of smaller spines (Fig. 2 C); female subgenital plate simple, not divided (Fig. 2 D); male styli variable, frequently modified, asymmetrical, or unequal in size (Fig. 2 E).....8

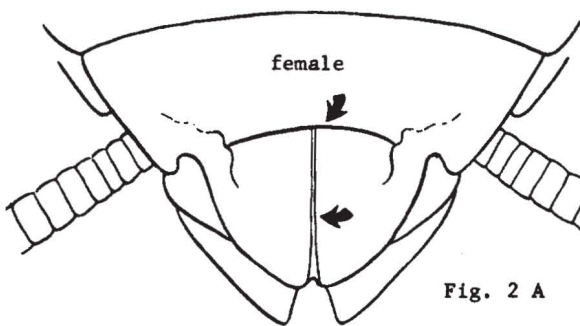


Fig. 2 A

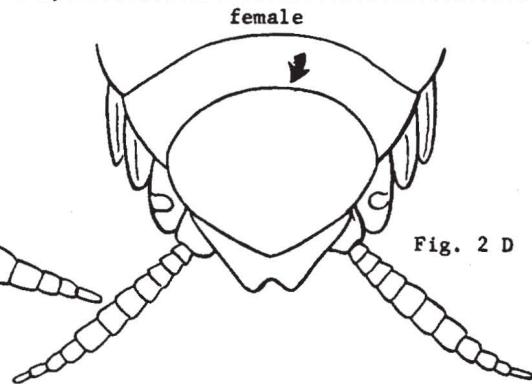


Fig. 2 D

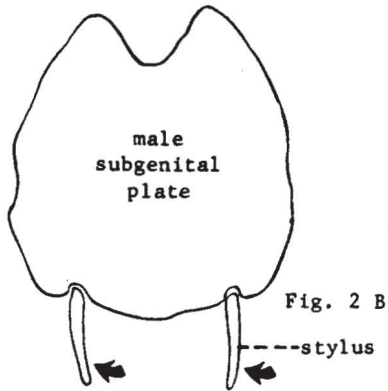


Fig. 2 B

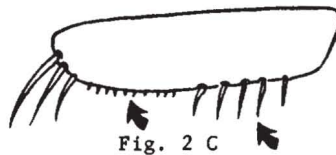


Fig. 2 C

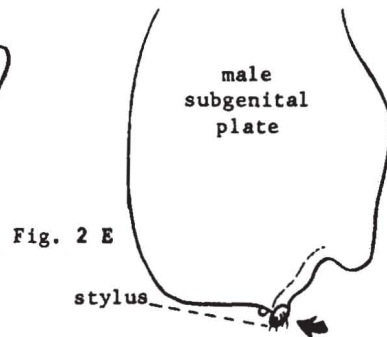


Fig. 2 E

- 3. Front wing in both sexes extending beyond tip of abdomen (Fig. 3 A).....4
- Front wing in both sexes not reaching tip of abdomen (Fig. 3 B).....7

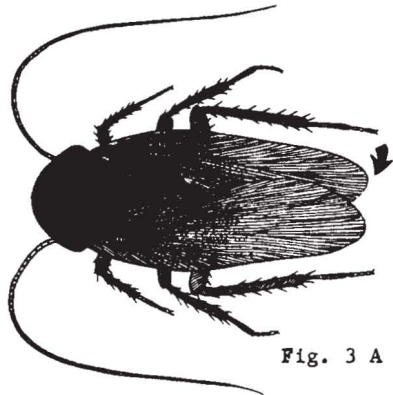


Fig. 3 A

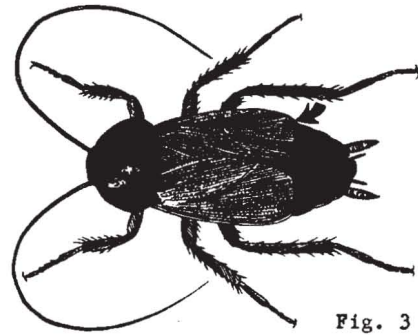


Fig. 3 B

- 4. Uniformly dark blackish-brown, shining species (Fig. 4 A).....
(*Periplaneta fuliginosa*) SMOKY BROWN COCKROACH
- Species with some yellowish markings on pronotum or front wing or both (Fig. 4 B).....5

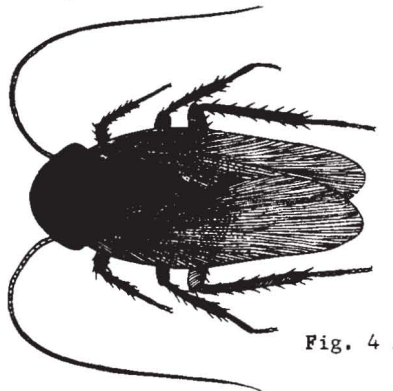


Fig. 4 A

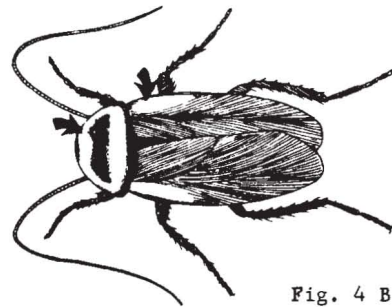


Fig. 4 B

- 5. Front wing with yellowish stripe; pronotum with yellowish and darker areas very contrastingly marked (Fig. 5 A).....(*Periplaneta australasiae*) AUSTRALIAN COCKROACH
- Front wing entirely brownish; pronotum with yellowish and darker areas less contrastingly marked (Fig. 5 B).....6

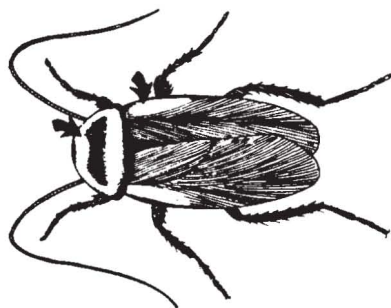


Fig. 5 A

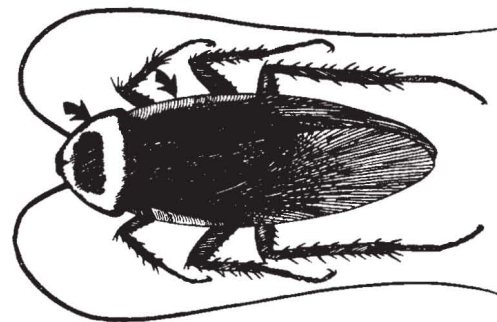
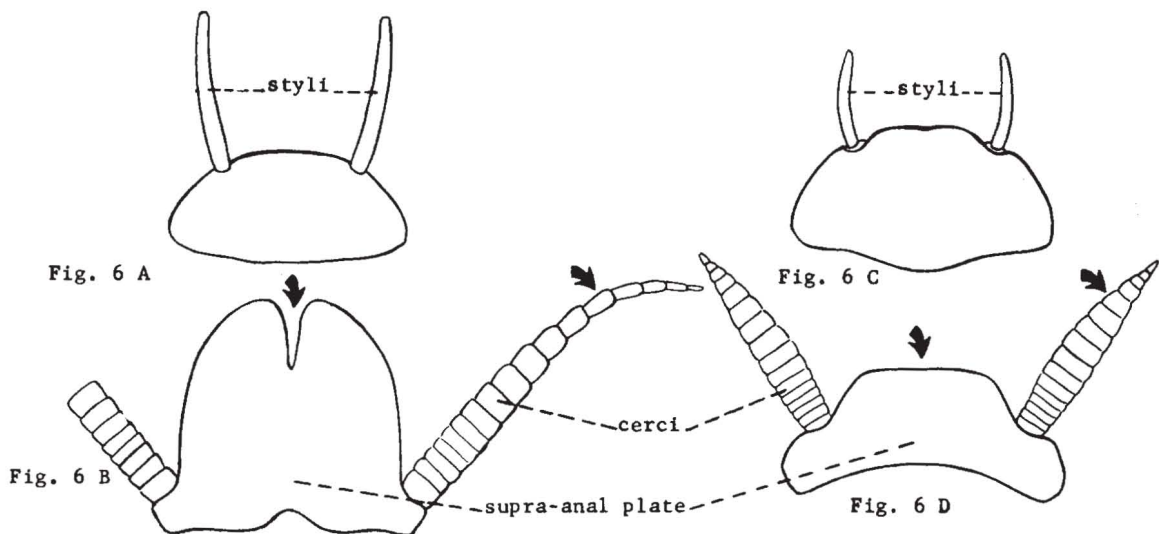


Fig. 5 B

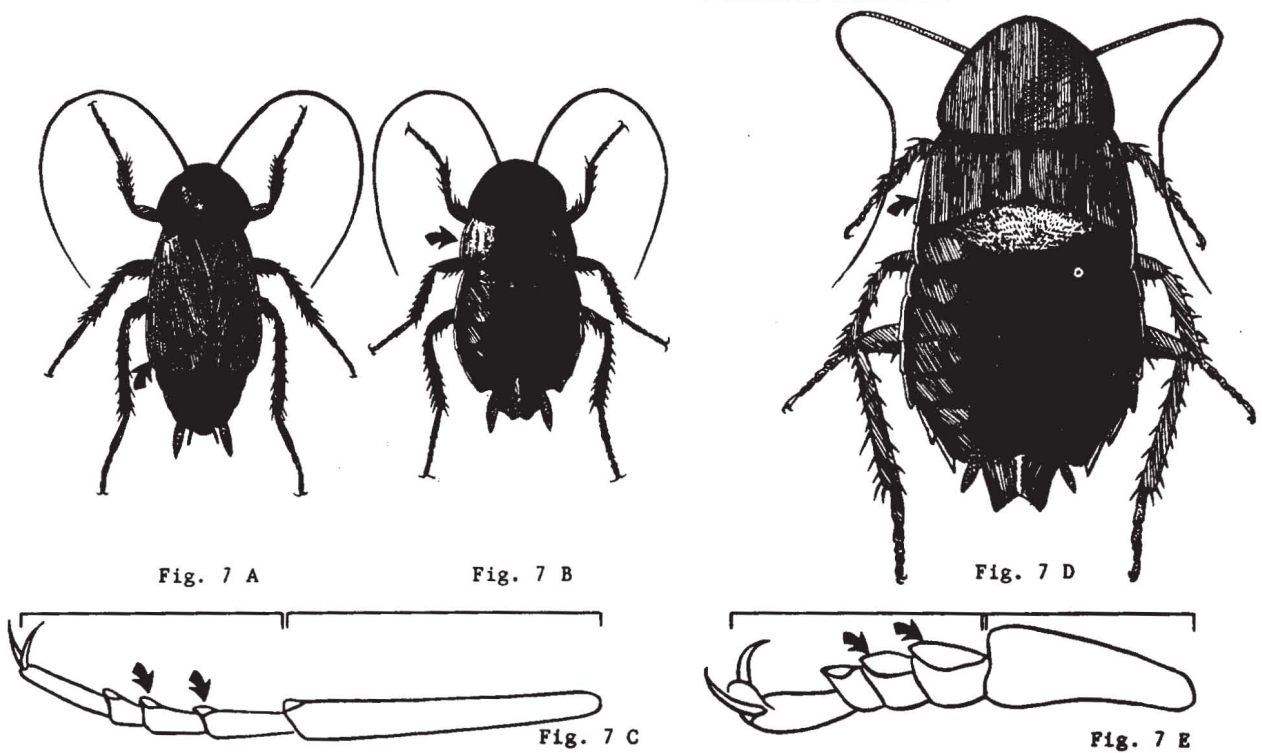
6. Styli very long and slender, longer than space between their bases (Fig. 6 A); cercus long and slender particularly in the male; male supra-anal plate deeply notched (Fig. 6 B).....
(*Periplaneta americana*) AMERICAN COCKROACH

Styli shorter, not as long as space between their bases (Fig. 6 C); cercus stouter and more evenly spindle-shaped; male supra-anal plate truncate or feebly notched (Fig. 6 D).....
(*Periplaneta brunnea*) BROWN COCKROACH



7. Blackish species, 15-27 mm. long; male front wings covering two-thirds of abdomen (Fig. 7 A); female front wings widely separated pads (Fig. 7 B); first segment of hind tarsus longer than segments 2-5 combined, pulvilli of second and third segments small (Fig. 7 C).....
(*Blatta orientalis*) ORIENTAL COCKROACH

Mahogany brownish species, 30-40 mm. long; front wings reduced to short pads, not widely separated (Fig. 7 D); first segment of hind tarsus shorter than segments 2-5 combined, pulvilli of second and third segments large (Fig. 7 E)....(*Eurycotis floridana*) LARGE FLORIDA COCKROACH



- 8. Pronotum with two conspicuous longitudinal dark bars on a pale background (Fig. 8 A).....9
- Pronotum variously marked, but without two conspicuous dark longitudinal bars (Fig. 8 B)....10



Fig. 8 A

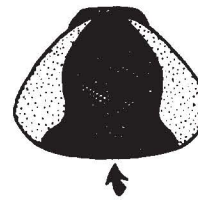


Fig. 8 B

- 9. Face pale (Fig. 9 A); male subgenital plate asymmetrical, styli very unequal, short and rounded (Fig. 9 B).....(*Blattella germanica*) GERMAN COCKROACH

Face dark; male subgenital plate almost symmetrical, styli somewhat elongate and subequal in size (Fig. 9 C).....(*Blattella vaga*) FIELD COCKROACH

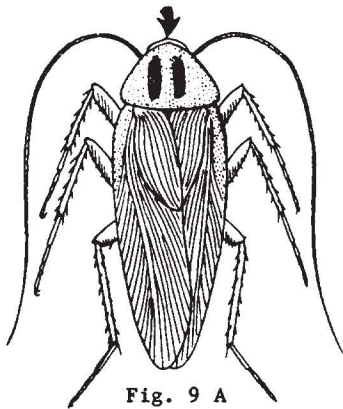


Fig. 9 A

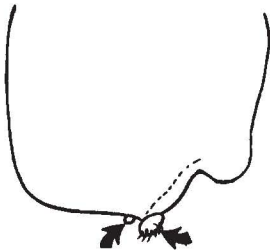


Fig. 9 B

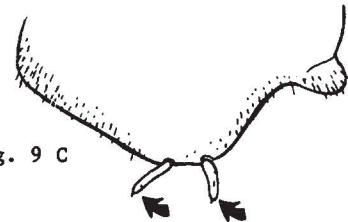


Fig. 9 C

- 10. Pronotum with a broad dark central stripe; front wings of both sexes appearing to have two transverse brownish bars, some pale specimens showing bars poorly (Fig. 10 A). Width of pronotum usually not exceeding 4.5 mm.....(*Supella supellectilium*) BROWN-BANDED COCKROACH

Pronotum and front wings otherwise, or, if pronotum is so marked, its width exceeding 4.5 mm. (Fig. 10 B).....11

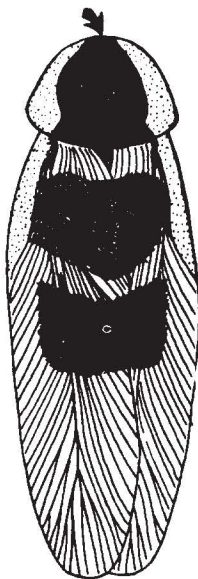


Fig. 10 A



Fig. 10 B

11. Larger species 9-25 mm. or more in length; front wing without small dark spots in winged specimens (Fig. 11 A); claws equal (Fig. 11 B); ventral anterior margin of front femur with 3 long apical spines (Fig. 11 C).....(Parcoblatta species) WOOD COCKROACHES

Small species, 8-9 mm. long; front wing with small dark spots (Fig. 11 D); claws unequal (Fig. 11 E); ventral anterior margin of front femur with 2 long apical spines (Fig. 11 F)....
.....(Ectobius pallidus) SPOTTED MEDITERRANEAN COCKROACH

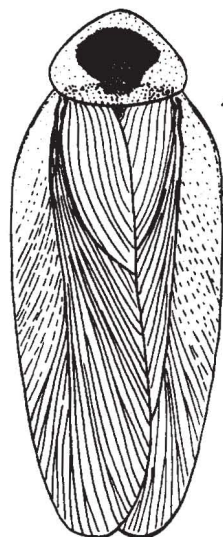


Fig. 11 A

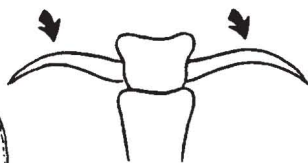


Fig. 11 B

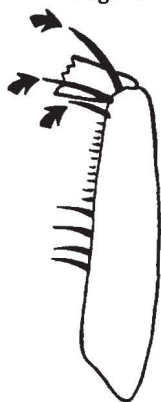


Fig. 11 C



Fig. 11 D

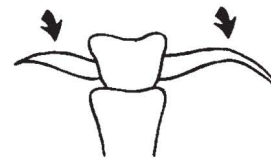


Fig. 11 E



Fig. 11 F

12. Top of eyes close together (Fig. 12 A); general color a nearly uniform greenish; posterior margin of pronotum somewhat angularly produced (Fig. 12 B) (Panchlora nivea) CUBAN COCKROACH

Top of eyes sometimes distant (Fig. 12 C); general color various shades of brown and gray; pronotum usually not angularly produced posteriorly (Fig. 12 D).....13



Fig. 12 A

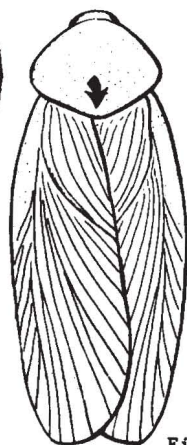


Fig. 12 B



Fig. 12 C



Fig. 12 D

13. Medium sized species, 30 mm. or less in length, including folded wings (Fig. 14 A & B).....14
 Large species 40 mm. or more in length, including folded wings (Fig. 15 A & C).....15
14. Pronotum uniformly blackish except a narrow yellowish band along anterior and lateral margins (Fig. 14 A).....(*Pycnoscelus surinamensis*) SURINAM COCKROACH
 Pronotum pale with a narrow dark longitudinal submarginal band on each side and irregular brownish blotches on disc (Fig. 14 B).....(*Nauphoeta cinerea*) CINEREOUS COCKROACH

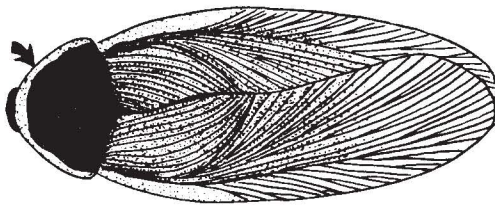


Fig. 14 A

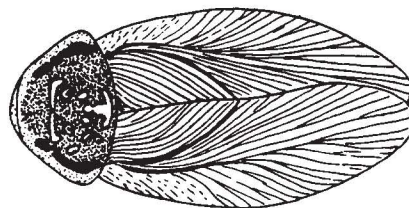


Fig. 14 B

15. Disc or pronotum with shield-like design, sometimes skull-like design (Fig. 15 A); front femur with one or more stout spurs on underside (Fig. 15 B).....
(*Blaberus giganteus*; *Blaberus craniifer*) GIANT COCKROACH
- Disc of pronotum with shield-like design darkened in outline only, not solid black (Fig. 15 C); front femur with a line of stiff hairs on anterior-ventral margin (Fig. 15 D).....
(*Leucophaea maderae*) MADEIRA COCKROACH

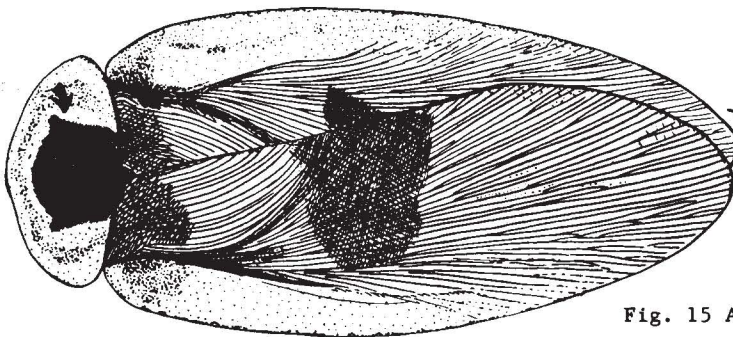


Fig. 15 A

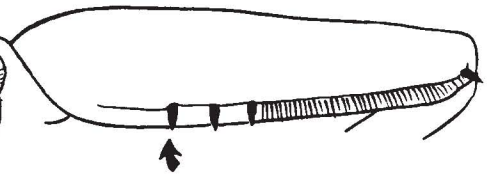


Fig. 15 B

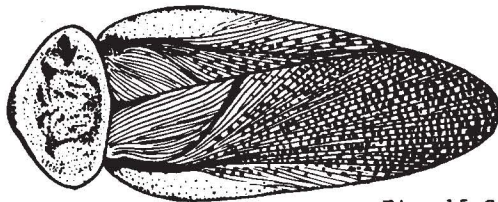


Fig. 15 C



Fig. 15 D