

INDEX TO IMAGES

CRUSTACEA

In the following, each entry is in the following order:

CAAB spcode, common name, scientific name, <authority>, family, notes, stations recorded

- 27500801, barnacle, Cirripedia sp. 1, balanomorph on octocoral/antipatharian stems, 013DR001B-044
- 27500802, stalked barnacle, Cirripedia sp. 2, Oxynaspididae?, embedded in live octocoral, 038DR010B-029
- 27500803, stalked barnacle, Cirripedia sp. 3, on antipatharian, 044DR013B-002
- 27524801, stalked barnacle, Arcoscalpellum sp. 1, Scalpellidae, striped stalk, 043DR012B-006
- 27524802, stalked barnacle, Scalpellidae sp. 1, Scalpellidae, plates on stalk, 043DR012B-007
- 28030801, mantis shrimp, Stomatopoda sp. 1, 005GR006B-001
- 28030802, mantis shrimp, Stomatopoda sp. 2, 006GR009B-001;015BS004B-004
- 28030803, mantis shrimp, Stomatopoda sp. 3, 007GR010B-001
- 28105801, tanaidacean, Tanaidacea sp. 1, 001BS001-004
- 28105802, tanaidacean, Tanaidacea sp. 2, 007BS003-012
- 28205801, isopod, Anthuridae sp. 1, Anthuridae, 007BS003-007
- 28205802, isopod, Anthuridae sp. 2, Anthuridae, 023GR042B-002
- 28206801, isopod, Paranthuridae sp. 1, Paranthuridae, 032BS006B-005
- 28220801, isopod, Cirolanidae sp. 1, Cirolanidae, 007BS003-006
- 28220802, isopod, Cirolanidae sp. 2, Cirolanidae, 010GR017B-003
- 28220803, isopod, Cirolanidae sp. 3, Cirolanidae, ex hole in rock, 019GR033B-001
- 28226801, isopod, Sphaeromatidae sp. 1, Sphaeromatidae, ex hole in rock, 019GR033B-002
- 28400801, gammarid amphipods, Amphipoda Gammaridea sp. 1, 001BS001-005
- 28711801, prawn, Penaeidae sp. 1, Penaeidae, 007BS003-004
- 28711802, prawn, Penaeidae sp. 2, Penaeidae, 016GR027B-003
- 28730801, shrimp, Caridea sp. 1, red pattern, 039GR062B-003
- 28765801, snapping shrimp, Alpheidae sp. 1, Alpheidae, red pattern, 006GR009B-003
- 28765802, snapping shrimp, Alpheidae sp. 2, Alpheidae, clear, 013GR001B-058
- 28765803, snapping shrimp, Alpheidae sp. 3, Alpheidae, red band on claw, 016GR027B-002
- 28765804, snapping shrimp, Alpheidae sp. 4, Alpheidae, long palm, setae on finger, 022GR038D-002
- 28765805, snapping shrimp, Alpheidae sp. 5, Alpheidae, spotted long palm, no setae on finger, 023GR042B-003
- 28765806, snapping shrimp, Alpheidae sp. 6, Alpheidae, clear, black spots on abdomen, 038DR010B-022
- 28770801, shrimp, Pandalidae sp. 1, Pandalidae, 020DR005B-009

28803801, slow prawn, Callianassidae sp. 1, Callianassidae, faint pattern, 002GR001B-001;005GR006B-002;002GR085B-003

28803802, slow prawn, Callianassidae sp. 2, Callianassidae, red pattern, 007GR011B-004;064GR084B-003

28803803, slow prawn, Callianassidae sp. 3, Callianassidae, sm, white band on claw, long palm, 007GR011B-003

28803804, slow prawn, Callianassidae sp. 4, Callianassidae, orange, toothed claw, 015BS004B-006

28803805, slow prawn, Callianassidae sp. 5, Callianassidae, white band on claw, short palm, 023GR042B-004

28803806, slow prawn, Callianassidae sp. 6, Callianassidae, clear, no colour, 032BS006B-002

28803807, slow prawn, Callianassidae sp. 7, Callianassidae, pale, diffuse pink bars on claws, 032BS006B-003

28805801, slow prawn, Upogebiidae sp. 1, Upogebiidae, pair, subchelate claws, 002BS002-002

28805802, slow prawn, Upogebiidae sp. 2, Upogebiidae, female, orange pattern, 003GR005B-002

28805803, slow prawn, Upogebiidae sp. 3, Upogebiidae, pink claws, 015BS004B-003

28840004, elegant squat lobster, *Allogalthea elegans*, (A. Adams & White, 1848), Galatheidae, ex 013DR001B-001, 013DR001B-013

28840801, squat lobster, Galatheidae sp. 1, Galatheidae, translucent white, 013DR001B-054

28840802, squat lobster, Galatheidae sp. 2, Galatheidae, red claws, 013DR001B-055

28840803, squat lobster, Galatheidae sp. 3, Galatheidae, red pattern, large eyes, 3 rostral spines, male long palm, female short palm, 013DR001B-056;039GR061B-002;039GR062B-002

28840804, squat lobster, Galatheidae sp. 4, Galatheidae, red pattern, large eyes, 1 rostral spine, 018GR030B-001

28840805, squat lobster, Galatheidae sp. 5, Galatheidae, red spots ex sponge 006, 038DR010B-007

28840806, squat lobster, Galatheidae sp. 6, Galatheidae, blurred red pattern, large eyes, 3 rostral spines longer than sp. 3, 043GR069B-006

28840807, squat lobster, Galatheidae sp. 7, Galatheidae, female with eggs, 053DR015B-016

28843801, half crab, Porcellanidae sp. 1, Porcellanidae, 013DR001B-052

28865801, frog crab, Raninidae sp. 1, Raninidae, female with eggs, 002BS002-003;003GR004B-002

28880801, spider crab, Majidae sp. 1, Majidae, 013GR020B-001

28880802, spider crab, Majidae sp. 2, Majidae, 019GR033B-006

28900801, crab, Corystidae sp. 1, Corystidae, 018GR030B-002

28911801, swimmer crab, Portunus sp. 1, Portunidae, female with eggs, 001BS001-001

28911802, swimmer crab, Thalamita sp. 1, Portunidae, male, 013DR001B-059

28911803, swimmer crab, Charybdis sp. 1, Portunidae, male, 053DR015B-001

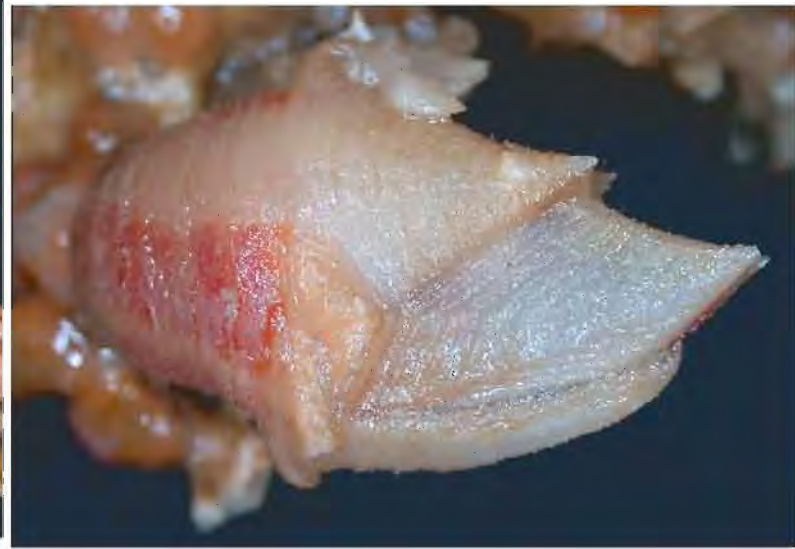
28922801, crab, Goneplacidae sp. 1, Goneplacidae, tentative family placement, 032BS006B-004

28922802, crab, Goneplacidae sp. 2, Goneplacidae, tentative family placement, 064GR084B-002

28926801, hairy crabs, Pilumnidae sp. 1, Pilumnidae, 013DR001B-057



27524801-043DR012B-006a-Arcoscalpellum-sp1.tif



27524801-043DR012B-006b-Arcoscalpellum-sp1.tif



27524801-043DR012B-006c-Arcoscalpellum-sp1.tif



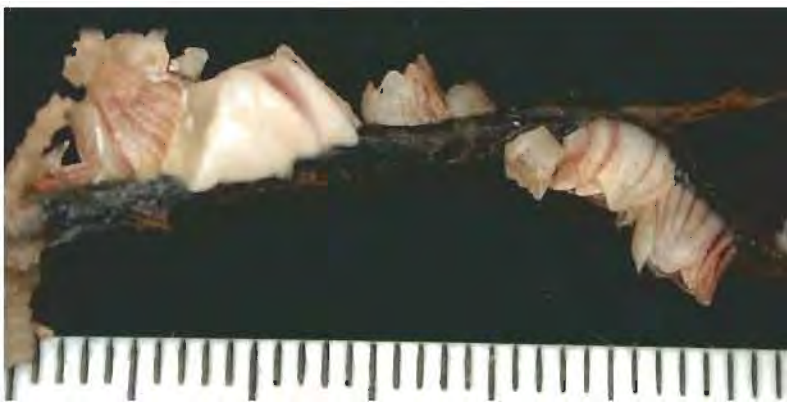
27524802-043DR012B-007a-Scalpellidae-sp1.tif



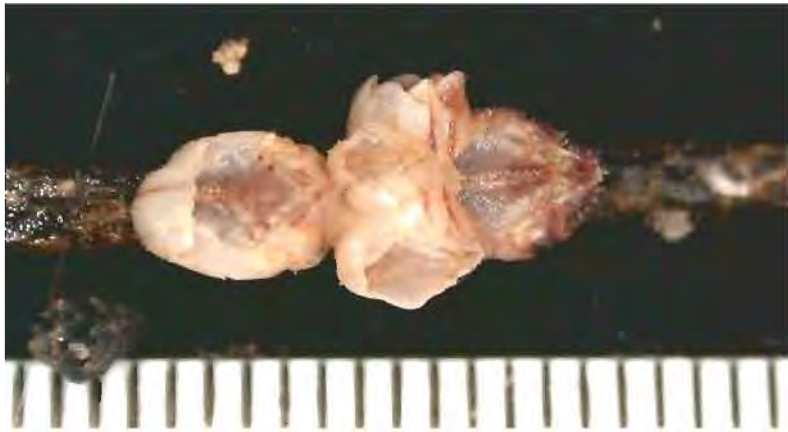
27524802-043DR012B-007b-Scalpellidae-sp1.tif



27524802-043DR012B-007c-Scalpellidae-sp1.tif



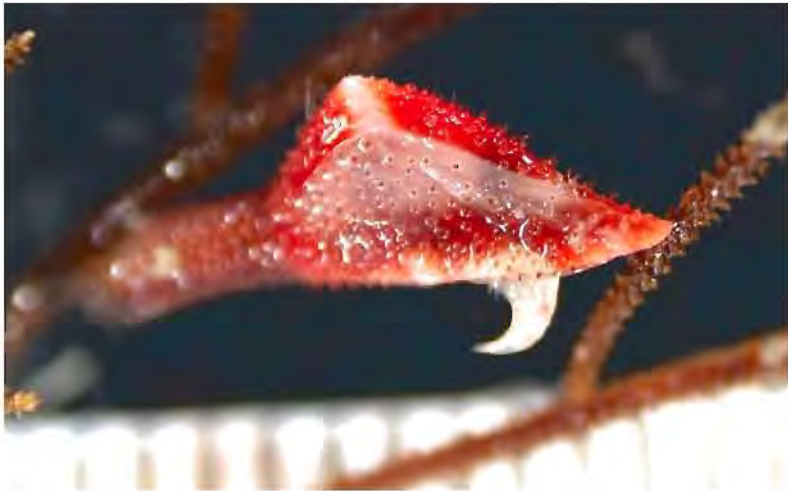
27500801-013DR001B-044a-Cirripedia-sp1.tif



27500801-013DR001B-044b-Cirripedia-sp1.tif



27500802-038DR010B-029-Cirripedia-sp2.tif



27500803-044DR013B-002-Cirripedia-sp3.tif



28030801-005GR006B-001-Stomatopoda-sp1.tif



28030802-006GR009B-001-Stomatopoda-sp2.tif



28030802-015BS004B-004-Stomatopoda-sp2.tif



28030803-007GR010B-001a-Stomatopoda-sp3.tif



28030803-007GR010B-001b-Stomatopoda-sp3.tif



28220801-007BS003-006-Cirolanidae-sp1.tif



28220802-010GR017B-003a-Cirolanidae-sp2.tif



28220802-010GR017B-003b-Cirolanidae-sp2.tif



28220803-019GR033B-001-Cirolanidae-sp3.tif



28226801-019GR033B-002-Sphaeromatidae-sp1.tif



28400801-001BS001-005-Gammaridea-sp1.tif



28711801-007BS003-004a-Penaeidae-sp1.tif



28711801-007BS003-004b-Penaeidae-sp1.tif



28711802-016GR027B-003a-Penaeidae-sp2.tif



28711802-016GR027B-003b-Penaeidae-sp2.tif



28730801-039GR062B-003a-Caridea-sp1.tif



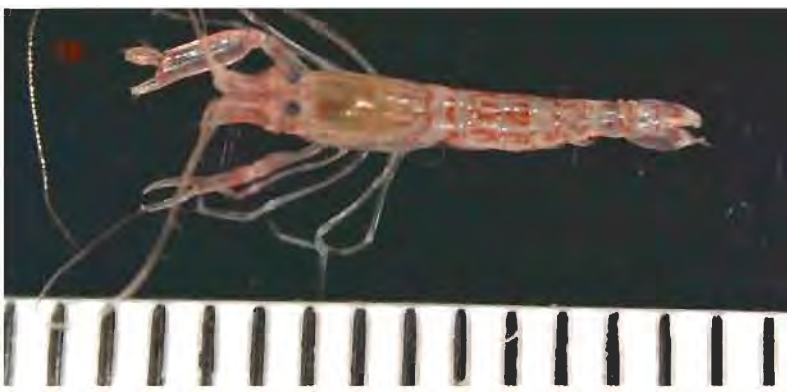
28730801-039GR062B-003b-Caridea-sp1.tif



28770801-020DR005B-009a-Pandalidae-sp1.tif



28770801-020DR005B-009b-Pandalidae-sp1.tif



28765801-006GR009B-003a-Alpheidae-sp1.tif



28765801-006GR009B-003b-Alpheidae-sp1.tif



28765802-013DR001B-058a-Alpheidae-sp2.tif



28765802-013DR001B-058b-Alpheidae-sp2.tif



28765803-016GR027B-002a-Alpheidae-sp3.tif



28765803-016GR027B-002b-Alpheidae-sp3.tif



28765804-022GR038B-002a-Alpheidae-sp4.tif



28765804-022GR038B-002b-Alpheidae-sp4.tif



28765805-023GR042B-003a-Alpheidae-sp5.tif



28765805-023GR042B-003b-Alpheidae-sp5.tif



28765806-038DR010B-022a-Alpheidae-sp6.tif



28765806-038DR010B-022b-Alpheidae-sp6.tif



28105801-001BS001-004-Tanaidacea-sp1.tif



28105802-007BS003-012-Tanaidacea-sp2.tif



28205801-007BS003-007-Anthuridae-sp1.tif



28205802-023GR042B-002-Anthuridae-sp2.tif



28206801-032BS006B-005a-Paranthuridae-sp1.tif



28206801-032BS006B-005b-Paranthuridae-sp1.tif



28803801-002GR001B-001a-Callianassidae-sp1.tif



28803801-002GR001B-001b-Callianassidae-sp1.tif



28803801-002GR001B-001c-Callianassidae-sp1.tif



28803801-002GR001B-001d-Callianassidae-sp1.tif



28803801-002GR085B-003a-Callianassidae-sp1.tif



28803801-002GR085B-003b-Callianassidae-sp1.tif



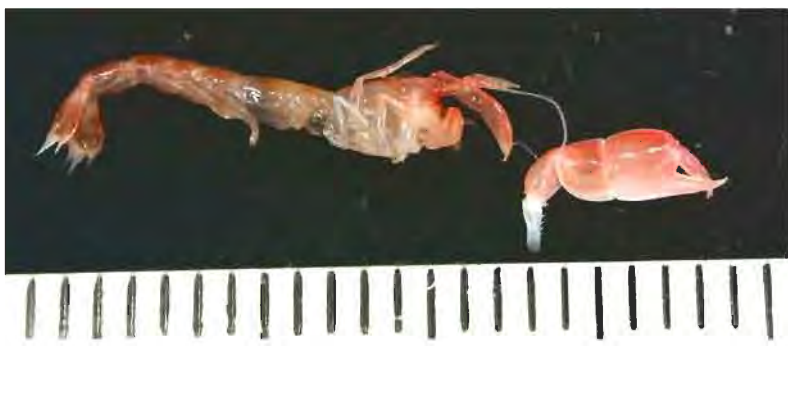
28803801-005GR006B-002a-Callianassidae-sp1.tif



28803801-005GR006B-002d-Callianassidae-sp1.tif



28803802-007GR011B-004a-Callianassidae-sp2.tif



28803802-007GR011B-004b-Callianassidae-sp2.tif



28803802-064GR084B-003a-Callianassidae-sp2.tif



28803802-064GR084B-003b-Callianassidae-sp2.tif



28803803-007GR011B-003-Callianassidae-sp3.tif



28803804-015BS004B-006a-Callianassidae-sp4.tif



28803804-015BS004B-006b-Callianassidae-sp4.tif



28803804-015BS004B-006c-Callianassidae-sp4.tif



28803805-023GR042B-004a-Callianassidae-sp5.tif



28803805-023GR042B-004b-Callianassidae-sp5.tif



28803806-032BS006B-002a-Callianassidae-sp6.tif



28803806-032BS006B-002b-Callianassidae-sp6.tif



28803807-032BS006B-003a-Callianassidae-sp7.tif



28803807-032BS006B-003b-Callianassidae-sp7.tif



28805801-002BS002-002a-Upobebiidae-sp1-m.tif



28805801-002BS002-002b-Upobebiidae-sp1-m.tif



28805801-002BS002-002c-Upobebiidae-sp1-f.tif



28805801-002BS002-002d-Upobebiidae-sp1-f.tif



28805802-003GR005B-002a-Upobebiidae-sp2.tif



28805802-003GR005B-002b-Upobebiidae-sp2.tif



28805802-003GR005B-002c-Upobebiidae-sp2.tif



28805803-015BS004B-003a-Upobebiidae-sp3.tif



28805803-015BS004B-003b-Upobebiidae-sp3.tif



28840801-013DR001B-054a-Galatheidae-sp1.tif



28840801-013DR001B-054b-Galatheidae-sp1.tif



28840802-013DR001B-055a-Galatheidae-sp2.tif



28840802-013DR001B-055b-Galatheidae-sp2.tif



28840803-013DR001B-056a-Galatheidae-sp3.tif



28840803-013DR001B-056b-Galatheidae-sp3.tif



28840803-039GR061B-002a-Galatheididae-sp3.tif



28840803-039GR061B-002b-Galatheididae-sp3.tif



28840803-039GR062B-002a-Galatheididae-sp3.tif



28840803-039GR062B-002b-Galatheididae-sp3.tif



28840804-018GR030B-001a-Galatheididae-sp4.tif



28840804-018GR030B-001b-Galatheididae-sp4.tif



28840004-013DR001B-013-Allogalatea-elegans.tif



28840805-038DR010B-007a-Galatheidae-sp5.tif



28840805-038DR010B-007b-Galatheidae-sp5.tif



28840805-038DR010B-007c-Galatheidae-sp5.tif



28840806-043GR069B-006a-Galatheidae-sp6.tif



28840806-043GR069B-006b-Galatheidae-sp6.tif



28840807-053DR015B-016-Galatheidae-sp7.tif



28843801-013DR001B-052-Porcellanidae-sp1.tif



28846801-002BS002-003a-Hippidae-sp1.tif



28846801-002BS002-003b-Hippidae-sp1.tif



28846801-003GR004B-002a-Hippidae-sp1.tif



28846801-003GR004B-002b-Hippidae-sp1.tif



28880801-013GR020B-001a-Majidae-sp1.tif



28880801-013GR020B-001b-Majidae-sp1.tif



28880801-013GR020B-001c-Majidae-sp1.tif



28880802-019GR033B-006a-Majidae-sp2.tif



28880802-019GR033B-006b-Majidae-sp2.tif



28911801-001BS001-001a-Portunus-sp1.tif



28911801-001BS001-001b-Portunus-sp1.tif



28911802-013DR011B-059a-Thalamita-sp1.tif



28911802-013DR011B-059b-Thalamita-sp1.tif



28911803-053DR015B-001a-Charybdis-sp1.tif



28911803-053DR015B-001b-Charybdis-sp1.tif



28900801-018GR030B-002a-Corystidae-sp1.tif



28900801-018GR030B-002b-Corystidae-sp1.tif



28926801-013DR001B-057a-Pilumnidae-sp1.tif



28926801-013DR001B-057b-Pilumnidae-sp1.tif



28926801-013DR001B-057c-Pilumnidae-sp1.tif



28922801-032BS006B-004a-Goneplacidae-sp1.tif



28922801-032BS006B-004b-Goneplacidae-sp1.tif



28922801-032BS006B-004c-Goneplacidae-sp1.tif



28922802-064GR084B-002a-Goneplacidae-sp2.tif



28922802-064GR084B-002b-Goneplacidae-sp2.tif



28922802-064GR084B-002c-Goneplacidae-sp2.tif