



Spotted ladybird basics

Harmonia ladybirds are native to Australia and feed readily on many soft bodied insects, especially aphids and psyllids.

We offer two species, each adapted to a different climate. *H. conformis* is best suited to southern Australia, while *H. octomaculata*, is more suited to our tropical and subtropical regions.

Each jar contains

- 30 adult ladybird beetles
- Shredded paper
- Honey and frozen moth eggs for your beetles to feed on during transit

How to release

Your ladybird beetles should be released close to the pest population as soon as possible after arrival.

Where practicable, we suggest the use of **sleeve cages** (see image) to improve establishment and provide an opportunity for you to follow the progress of your predators.



Top left: *H. conformis* feeding on aphids, image courtesy of Jean and Fred (Flickr).

Right, above: *H. octomaculata* feeding on tomato potato psyllid, © Western Australian Agriculture Authority (Department of Primary Industries and Regional Development, WA) 2018. **Right, below:** ladybird larva feeding on aphids.



Storage

If, due to extreme weather or other factors, you need to store the beetles before release then we suggest that cool but not cold is best. They should be comfortable at around 18°C for several days. Carefully placing an additional smear of honey and a moist cotton ball in the container will help.

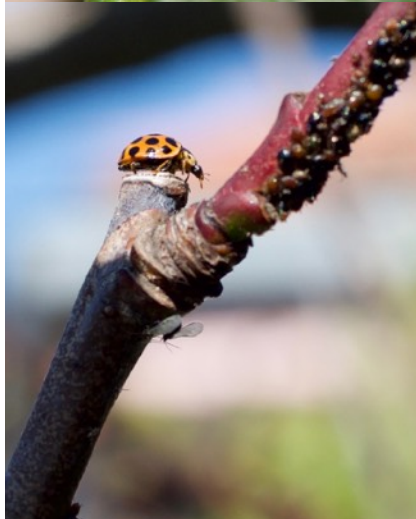
What to expect

Your adult *Harmonia* beetles are capable of feeding directly and immediately on pests such as aphids and psyllids. More importantly they should soon start to lay eggs, which although quite small (about 1mm long), are easy to recognise. After a few days the eggs will hatch and the young larvae will begin to feed. Larvae appear quite different to the adults and it is important that you learn to recognise them so as not to confuse them with pests.

Other information

Your *Harmonia* ladybirds will perform best if they have a comfortable climate and healthy plants on which to live. You can encourage adult ladybird beetles to stay in your garden by providing flowering plants where they can feed on nectar and pollen. This will also help to attract and sustain populations of other beneficial insects and mites.

For more information call us on 07 4646 2628 or visit our website: www.bugsforbugs.com.au



Top left: sleeve cage - used to contain the ladybirds close to the pest, where they can start to feed and lay their eggs. **Right, from top down:** *Harmonia* eggs; larva; pupa; and adult hunting aphids on a fruit tree.