

Coconut stick insect (102)

Summary

- Narrow distribution. Southwest Pacific. On coconut, sago palm, *Pandanus* and some wild palms. Outbreaks occur, when it is an important pest.
- Adults strip leaflets, leaving the midrib. Occasionally, defoliation occurs over several hundred hectares. Mature palms >25 m most affected.
- Eggs in the crown, fall into the leaf base, leaf litter or weeds. Nymphs climb to the crown. Only males fly.
- Natural enemies: chickens and myna birds take nymphs on the ground. There are parasitoid wasps that have been bred for biocontrol.
- Cultural control: sticky bands around trunks (e.g., 'Tanglefoot'); control weeds to expose eggs to sun; intercrop with cocoa – nymphs climb the cocoa and starve; note, lighting fires to smoke the insects no longer acceptable as fires damages the palms.
- Chemical control: none recommended.

Common Name

Coconut stick insect

Scientific Name

Graeffea crouanii. It is a member of the Phasmatidae.

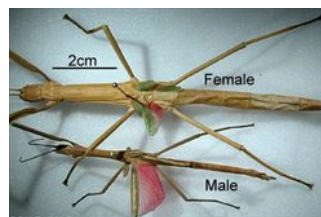


Photo 1. Male and female stick insect, *Graeffea crouanii*. Note the larger size of the female, but it has smaller wings and cannot fly.



Photo 2. Male and female stick insect, *Graeffea crouanii*.



Photo 4. Group of coconuts attacked by the stick insect, *Graeffea crouanii*.



Photo 3. The stick insects, *Graeffea crouanii*, have stripped the coconut fronds leaving only the midribs.



Photo 5. Close up coconut palm attacked by the stick insect, *Graeffea crouanii*. Note that the palm is recovering from the attack.

AUTHOR Grahame Jackson

Information from Waterhouse DF, Norris KR (1987) *Graeffea crouanii* (Le Guillou). *Biological Control Pacific Prospects*. Inkata Press. Assistance also provided by Wilco Liebregts, Eco-Consult Pacific, Fiji. Photo 1 Gerald McCormack, Cook Islands Biodiversity & Natural Heritage. (<http://cookislands.bishopmuseum.org/>). Photos 2-5 Richard Markham, ACIAR, Canberra.

Produced with support from the Australian Centre for International Agricultural Research under project PC/2010/090: *Strengthening integrated crop management research in the Pacific Islands in support of sustainable intensification of high-value crop production*, implemented by the University of Queensland and the Secretariat of the Pacific Community.

Copyright © 2022. All rights reserved.



Australian Government
Australian Centre for
International Agricultural Research



Web edition hosted at <https://apps.lucidcentral.org/pppw>

