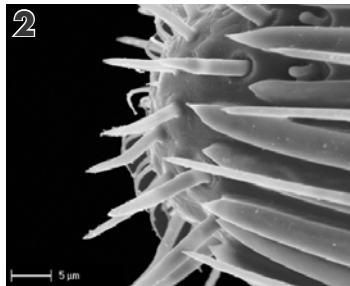
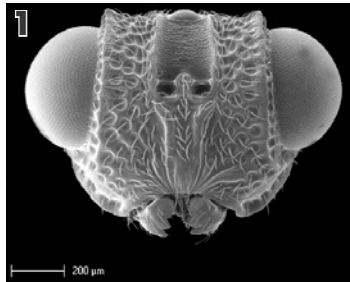


**1. Aximopsis sp. (Hymenoptera, Eurytomidae):** frontal view taken with a scanning electronic microscope, 70x.

**2. Eurytoma sp. (Hymenoptera, Eurytomidae):** detail of the ultrastructure of the top of the antenna; taken with a scanning electronic microscope, 5000x.

**3. Diadromus collaris (Gravenhorst) (Hymenoptera, Ichneumonidae):** parasitoid of diamondback moth; adult female.



## Main teams

### UMR 1062

**CBGP, Centre de Biologie et de Gestion des Populations**  
(Inra, Montpellier SupAgro, Cirad, IRD)  
Director: Denis Bourguet,  
bourguet@supagro.inra.fr

#### Thematic « Systématique-Taxonomie, Phylogénie-Phylogéographie »

Researchers involved: Denis Bourguet (Inra), Gérard Delvare (Cirad), Mireille Fargette (IRD), Marie-Stéphane Tixier-Garcin (Montpellier SupAgro), Laurent Granjon (Museum National d'Histoire Naturelle, assigned by IRD), Armelle Cœur-d'Acier (Inra), Bruno Michel (Cirad), Franck Dorkfeld (Inra), Johan Michaux (FNRS) Gauthier Dobigny (IRD), Serge Morand (IRD), Sylvie Manguin (IRD), Jean-Pierre Quéré (Inra), Maria Navajas (Inra), Alain Migeon (Inra)

#### Team « Écologie animale et Zoologie agricole - Acarologie »

Researchers - teachers involved:  
Serge Kreiter (Montpellier SupAgro), Marie-Stéphane Tixier-Garcin (Montpellier SupAgro), Michel Martinez (Inra), Jean-François Germain (LNPV), Philippe Reynaud (LNPV), Jean-Claude Streito (LNPV)

## Other teams working on this theme

### UMR 1062

**CBGP, Centre de Biologie et de Gestion des Populations**  
(Inra, Montpellier SupAgro, Cirad, IRD)  
Director: Denis Bourguet,  
bourguet@supagro.inra.fr

#### Team « Écologie intégrative des Systèmes Populations-Environnement »

Researchers involved: Maria Navajas (Inra), Alain Migeon (Inra)

**USDA-ARS, EBCL, Laboratoire Européen de Lutte Biologique**  
Director: Walker Jones,  
ebcl@ars-ebcl.org

#### Team « Lutte biologique contre les bio-invasions »

Researchers involved: Walker Jones, René Sforza, Brian Rector, William Meikle, Dominique Coutinot, Franck Hérard

### CSIRO,

**Laboratoire européen Team « Lutte biologique contre les bio-invasions »**  
Directors and researchers involved:  
Andy Sheppard (1<sup>st</sup> semester 2006),  
andy.sheppard@csiro.au

Mic Julien (2<sup>nd</sup> semester 2006),  
mic.julien@csiro.au

## The « International Complex of Biological Control at Agropolis » (C.I.L.B.A.)

C.I.L.B.A. created in 1989, is part of Agropolis International and aims to organize relationships between its members (Inra, Montpellier SupAgro, CNRS-CEFE, Cirad, IRD, Universities Montpellier 2 & 3, CSIRO, EBCL USDA/ARS and SPV), as well as to develop common perspectives in biological control at the local, national and international level.



C.I.L.B.A. comprises fifty scientists who study mechanisms and regulation processes of pest populations in crop protection, health, and environment, using biological control strategies. Biological control involves the use of natural enemies of pest species (insects, weeds, pathogens, etc.) to prevent or limit their damage or nuisance value.

This approach requires both fundamental and applied research, in particular on population dynamics, genetics, epidemiology and microbial ecology, the selection and rearing of suitable natural enemies and the development of crop protection programmes on an international scale.

C.I.L.B.A. is an international network of research and education professionals improving knowledge in IPM strategies for crops, pastures, and natural ecosystems. C.I.L.B.A. laboratories share multiple programs, skills, technologies, and know-how regarding taxonomy, molecular biology, classical biological control, and ecology of invasive species.

Studies conducted within the of C.I.L.B.A. framework include:

- development of efficient strategies to reduce crop losses and protect natural resources;
- evaluation of how to reduce chemical inputs;
- participation in the sustainable development of environmental agroecosystems;
- organization of internships and scientific open days on specific topics;
- leading discussion groups such as the Informal group of confined structures advising different agricultural institutes on security and safety.

**Contacts: Andy Sheppard and Régis Goebel, goebel@cirad.fr**

Available on [www.cilba.agropolis.fr](http://www.cilba.agropolis.fr)