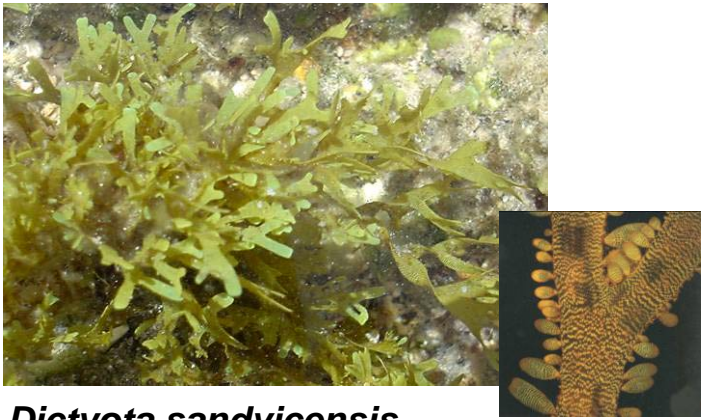
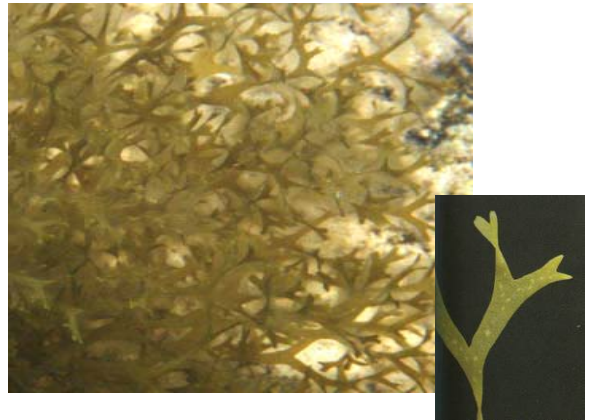


Dictyota - flat, forked ends



Dictyota sandvicensis
frilly sides, may have blue shimmer underwater



Dictyota acutiloba – branches spiral



Sargassum spp. - has "leaves", NOT forked, scratchy, stiff



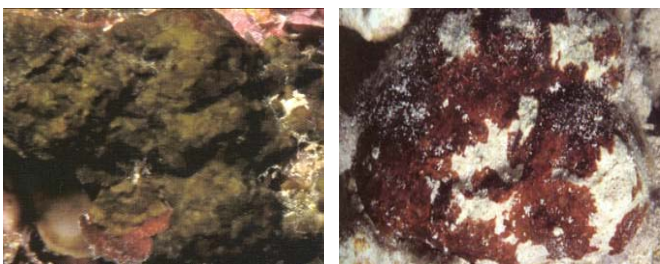
Dictyopteris spp. – flat "leaves" have "veins", forked towards ends



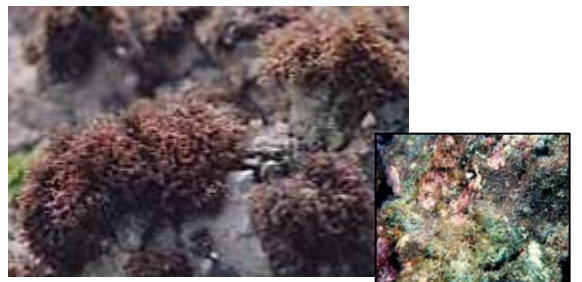
Asparagopsis taxiformis – soft and fuzzy, each branch cone-like



Wrangelia elegantissima - soft and fuzzy, each branch triangular



Brown-Colored Crust



Turf – very tiny short mix of different seaweed 1-2 cm tall, all colors



Acanthophora spicifera
flexible and spiky



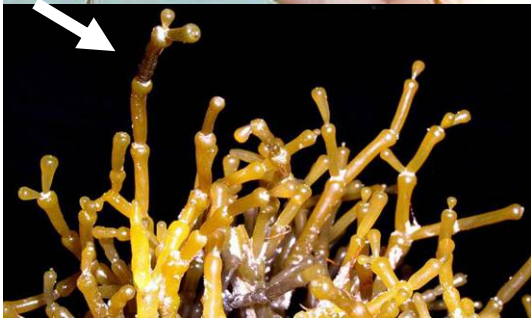
***Laurencia* spp.** – rounded tips, (NOT spiky)



***Kappaphycus/Euchema* spp.**
stiff, shiny, slick, warts, often entangled mat (common windward Oahu)



Laurencia mcdermidiae – only bright green
Laurencia



Gracilaria salicornia – NO
spikes or warts, notice constrictions



***Galaxaura/Liagora* spp.**
often pinkish, may be slippery



Trichogloea requienii
VERY slimy, feels like spaghetti



Hypnea musciformis – has hooks, elastic



Hypnea chordacea - main upright branches covered by soft, narrow side branches, no hooks



Colpomenia sinuosa - hollow



***Padina* spp.**



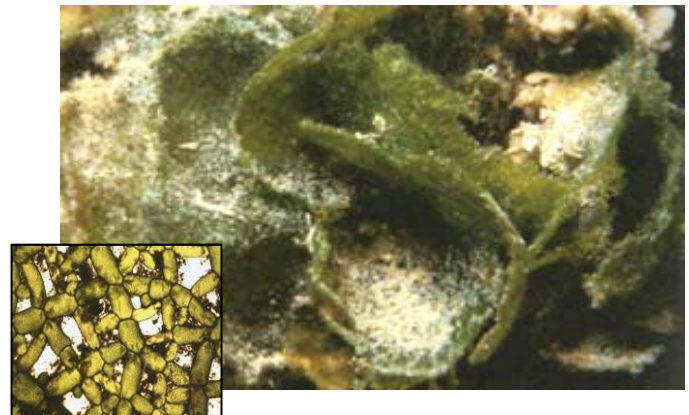
Avrainvillea amadelpa
leathery



Turbinaria ornata



Dictyosphaeria cavernosa
crunchy, bubble-like close-up



Microdictyon setchellianum – upright fan, thin and crunchy, net-like close-up



Ulva fasciata – thin and leafy



Ulva reticulata – has holes



Cladophoropsis/Cladophora spp.
tangled mat, grass-like

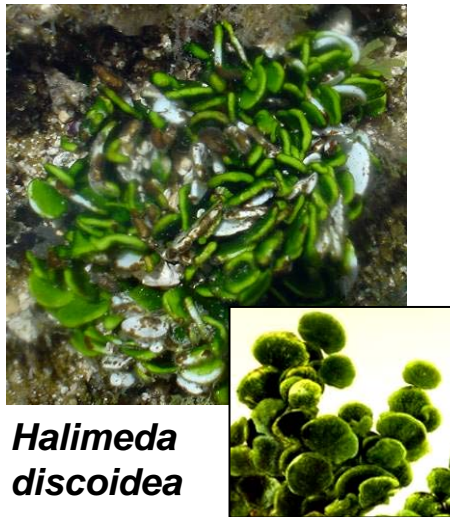


Codium edule – fuzzy & squishy



Blue-Green Algae (*Lyngbya*)

Color varies Green → Brown



Halimeda discoidea



Asteronema breviarticulatum
high intertidal, looks like dreadlocks



Pterocliadiella capillacea
(right) color varies

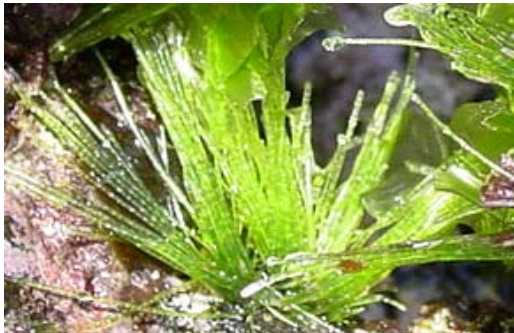
ADDITIONAL ALGAE



Hydroclathrus clathratus



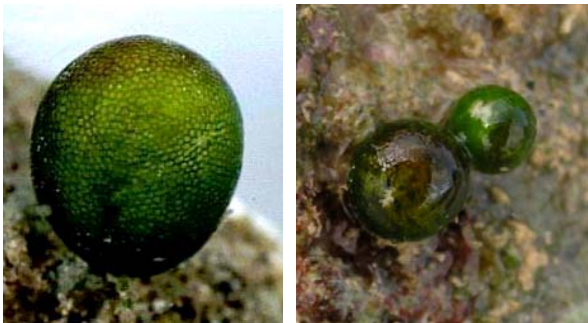
***Caulerpa* spp.** - "Stalks" attached by "root", morphology of "stalks" varies



Chaetomorpha antennina



Codium arabicum – fuzzy and squishy, flattened/knobby mat



Bornetella sphaerica – pea to marble sized



***Bryopsis* spp.** - bright green fine, feathery



Cladophora sericea – very fine, hairy, tangled, yellow green with "vein", see Lyngbya if dark



***Neomeris* spp.** – 2-3 cm tall